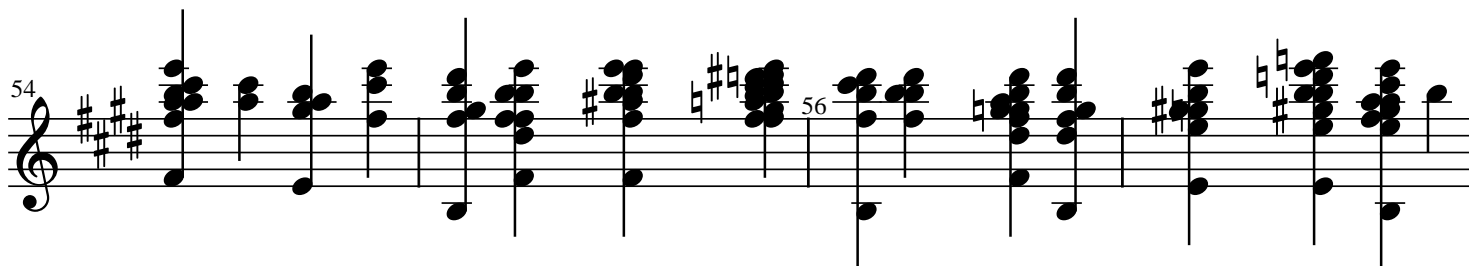
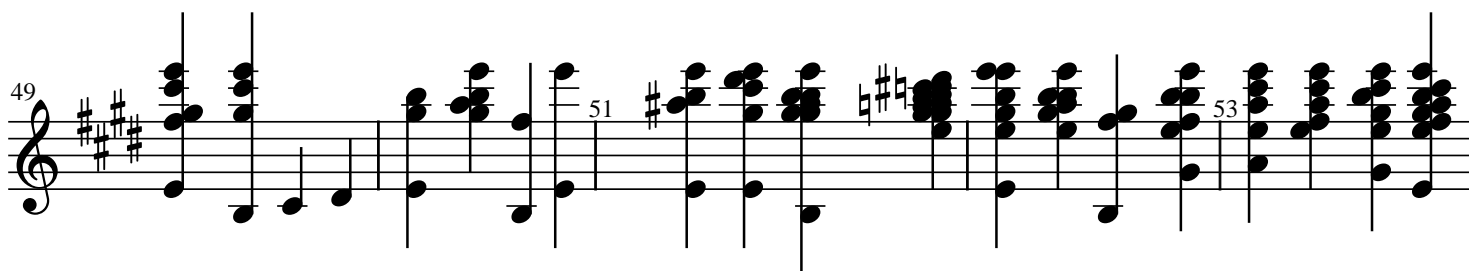
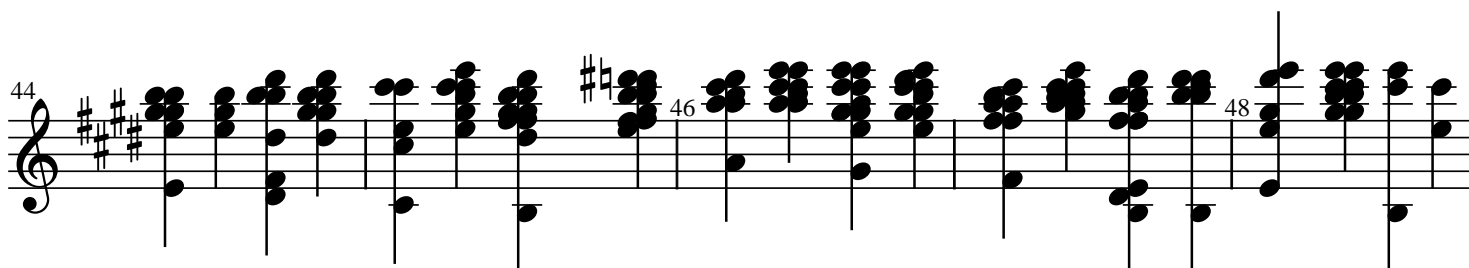
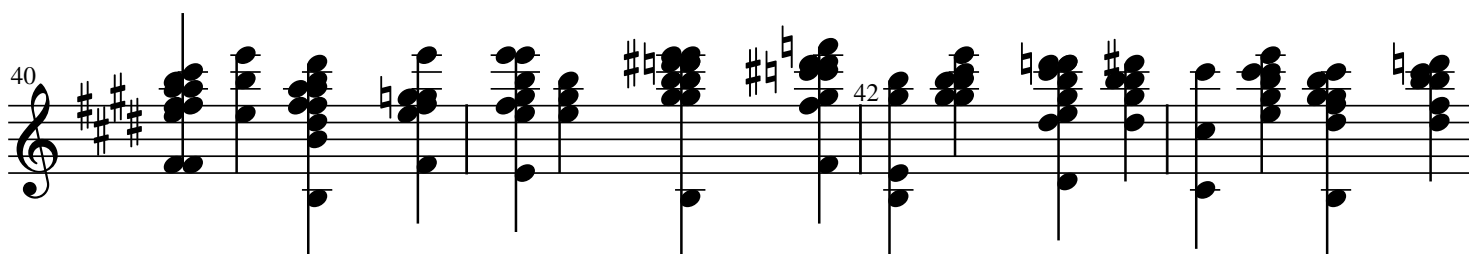
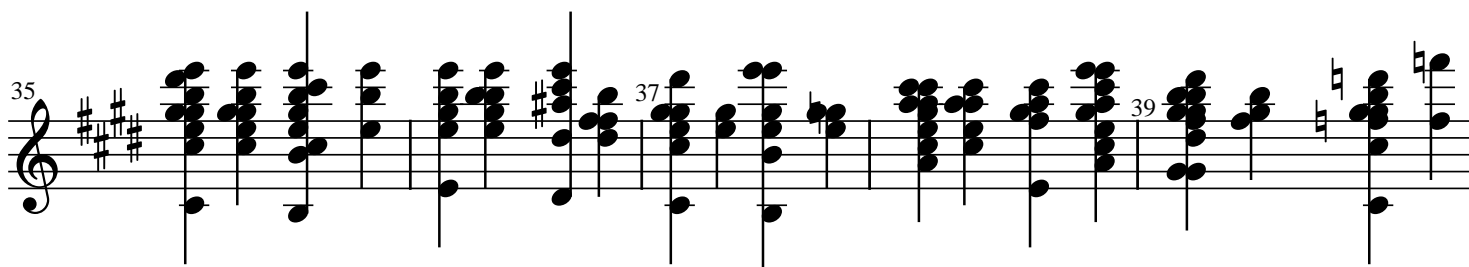
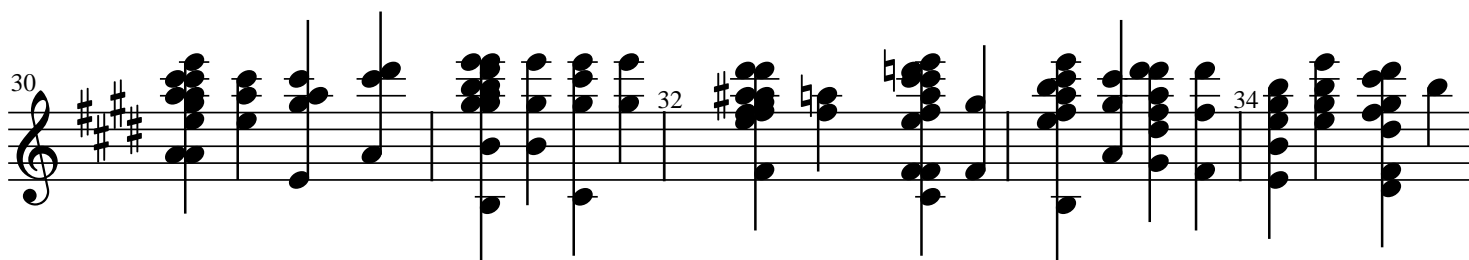


# Jingle Bells - Bate o Sino

## Saxofone Barítono

Saxofone Barítono

The image displays a musical score for a Saxophone Baritone, spanning measures 1 through 29. The score is written on a single staff with a treble clef and a key signature of three sharps (F#, C#, G#). The time signature is 4/4. The music is characterized by a series of complex, multi-measure rests and dense clusters of notes, suggesting a highly technical or experimental piece. The notation includes various accidentals and dynamic markings, such as 'p' (piano) and 'f' (forte). The score is divided into measures by vertical bar lines, with measure numbers 1, 5, 10, 15, 20, 25, and 29 clearly marked. The overall style is modern and challenging, with a focus on rhythmic and harmonic complexity.



58 60 62

63 65 67

68 70 72

73 75 77

78 80

82 84 86

